

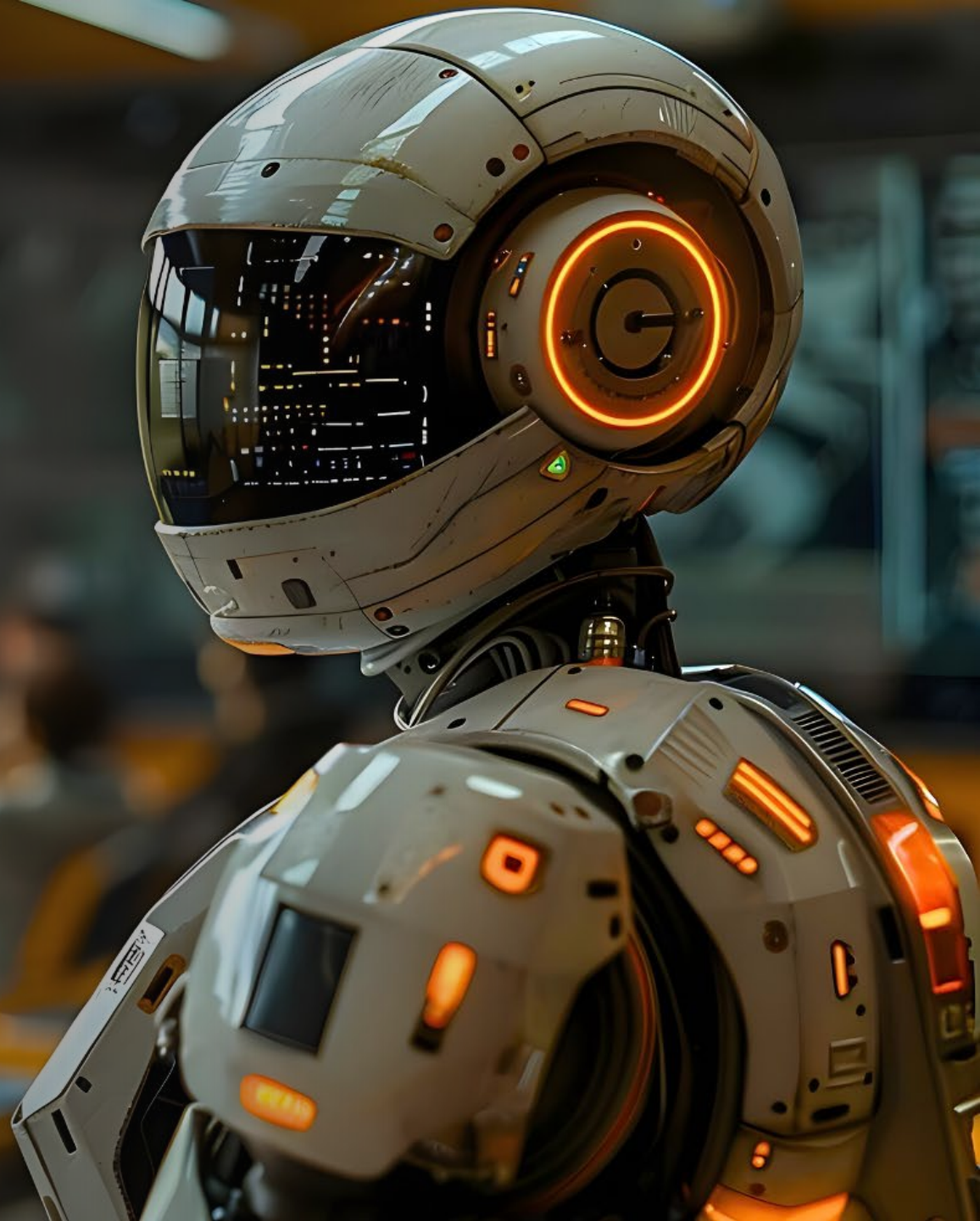


SmartAlly  
Tutor

Agentic Learning for A Certified AI Workforce

## Industry Academia Collaboration for AI Workforce Transformation

*Operationalizing AI skills through the Yitro EastWest SmartAlly Ecosystem.*



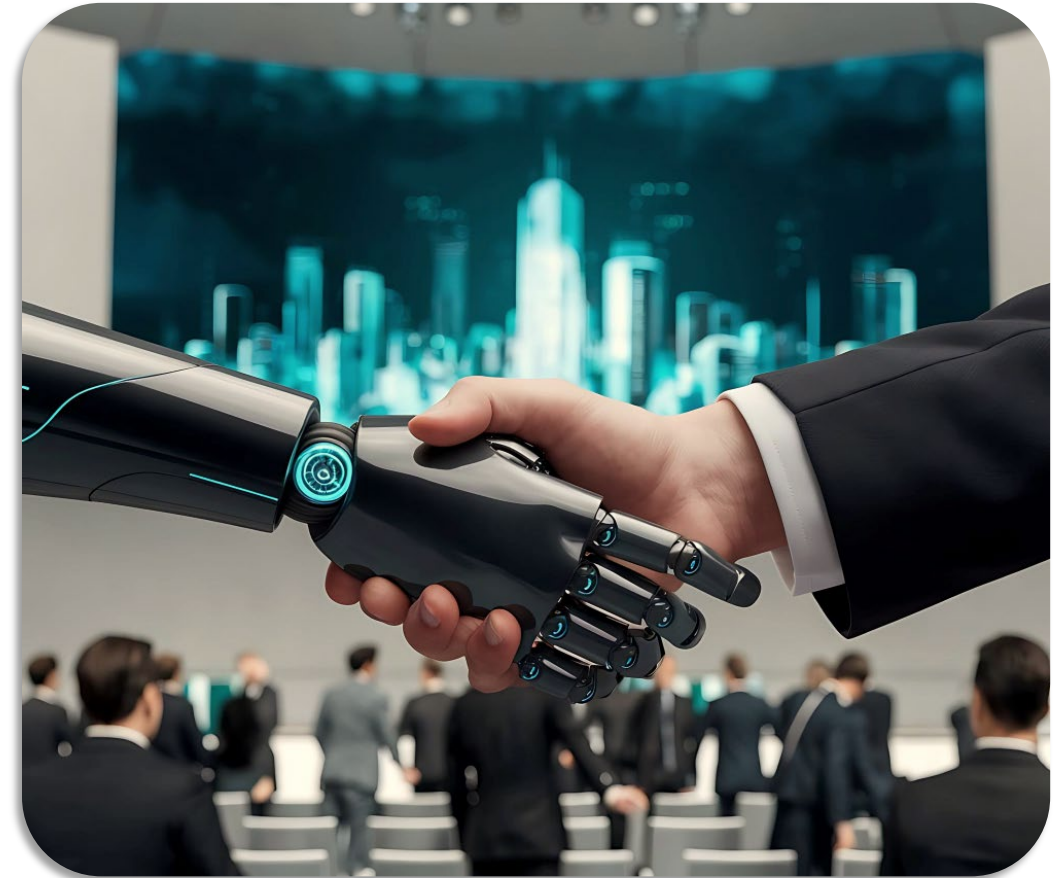
# Executive Vision – From Students to AI Workforce

- AI is the new “**Sovereign Asset.**” To attract enterprise interest and investment, the province must produce a workforce that is “**Day-1 Ready.**”
  - Transitioning from basic digital literacy to AI-enabled professional specialized skills.
  - Building an innovation hub that creates skilled professionals to enable high-value jobs.
- **Speaker Notes:** AI is a national security and economic priority. We aren't just teaching “**tech**”; we are building the infrastructure of the provincial economy.



## ➤ The Economic Argument:

- **Sustaining Investment:** Give businesses that have already invested in the Philippines a reason to stay by providing a skilled labour force.
- **Attracting FDI:** A province with a "Day-1 Ready" AI workforce is the most attractive destination for new enterprise investment.
- **Premium Remittances:** Training "AI Engineers" instead of general labour significantly increases foreign remittances and the provincial standard of living.



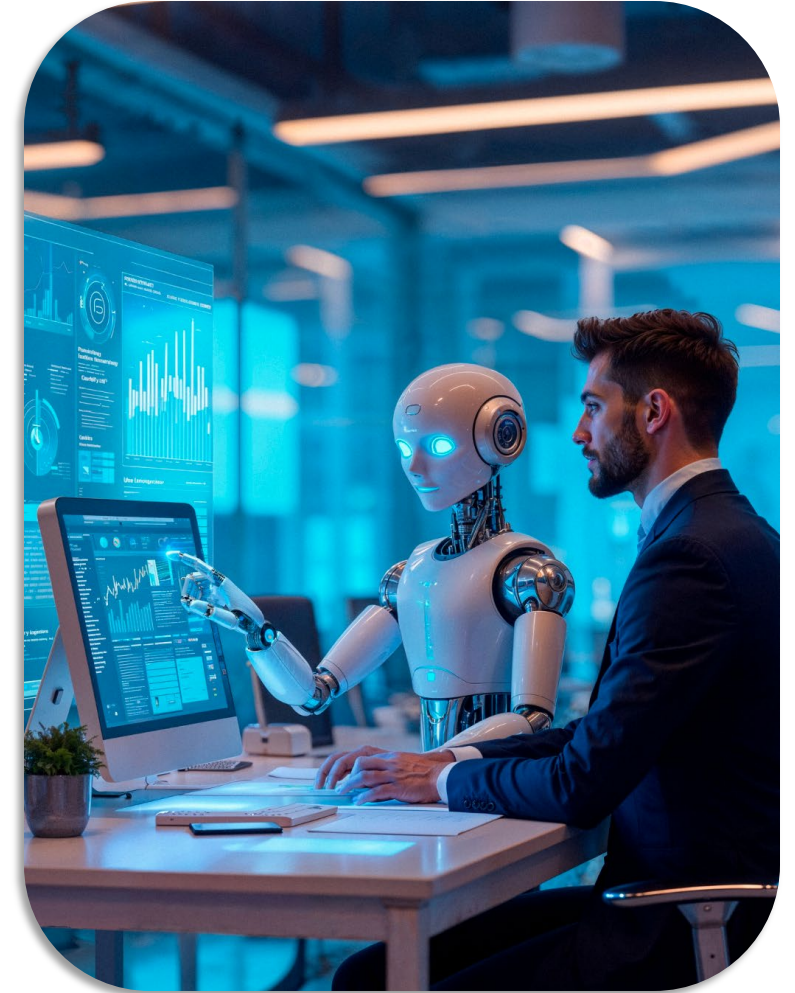
# The New Productivity Fundamental

- AI is no longer a niche technical skill; it is the fundamental tool for productivity across all sectors.
- **The Paradigm Shift:**
  - **The 1990s:** MS Office was the required baseline for all office work.
  - **The 2020s:** AI Co-pilots and Agentic workflows are the required baseline for all professional work.
  - **Universal Application:** Whether in nursing, plumbing, or law, AI is the "Skills Multiplier."
    - The Demand - The Global & Local Skills Gap
    - The "**Unfilled**" Crisis: Highlight sectors where jobs exist but remain vacant due to a lack of skills:
      - **Healthcare:** AI Clinical Documentation & Diagnostics.
      - **Tech:** Applied Malware Analysis & Python Systems.
      - **Commerce:** Audit Automation & Tourism Analytics.
- **Notes :**
  - Just as everyone learned to type and use spreadsheets, every student must now learn to prompt and manage AI agents.
  - There is a massive demand for "**AI-First**" graduates. We provide the roadmap to fill these roles.



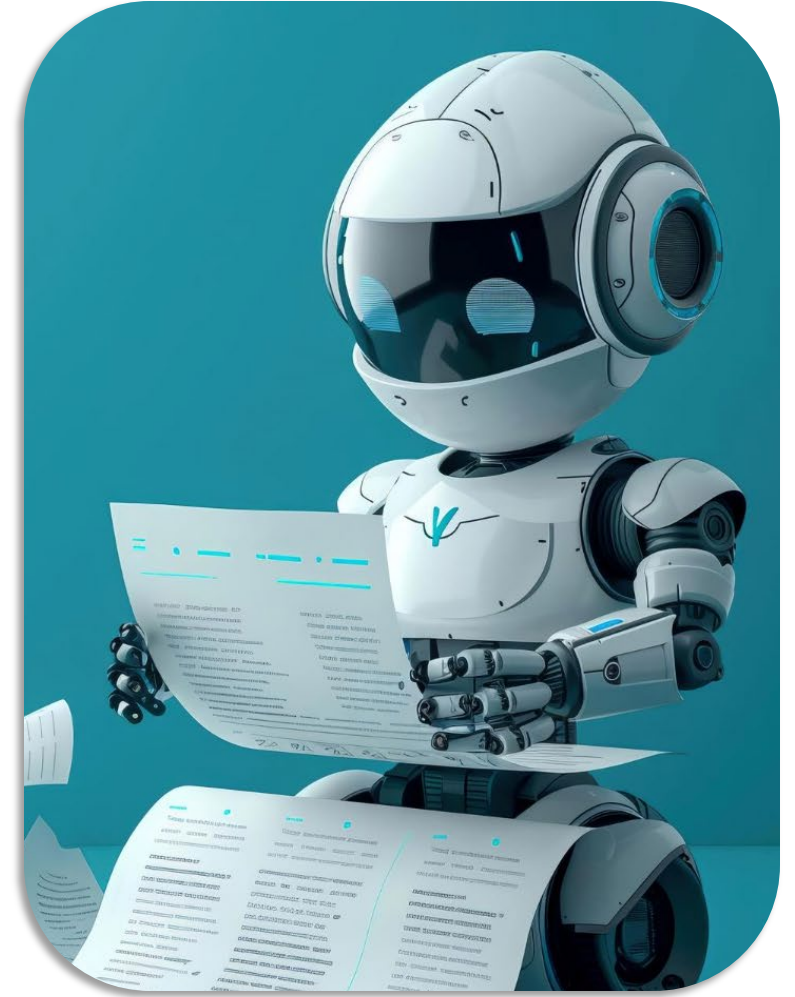
# Enhancing Education through Microcredentials

- SmartAlly uses "**Microcredentials**" to bridge the skill to job gap.
- **SmartAlly – The Passport to AI Opportunity**
  - **Defining SmartAlly:** It is not just e-learning software; it is a Passport.
  - The "**Face**": An agentic, voice-enabled AI tutor that personalizes learning.
  - The "**Value**": Deploying SmartAlly opens the door to the entire Industry ecosystem - industry problems, research labs, and hiring pipelines.
  - **Agentic Advantage:** It doesn't just teach; it helps students build agentic workflows.
- **Platform Capability:**
  - **Agentic Adaptive Tutor:** SmartAlly isn't just a platform; it's an execution layer that personalizes learning paths based on real-time student performance.
  - **Micro-stacking:** Breaking down complex AI concepts into bite-sized, certified modules (e.g., "AI Clinical Documentation" or "Malware Analysis").
- **Inclusive Reach:** Overcoming the digital divide by providing high-quality, voice-enabled AI teaching to students everywhere and at anytime
- **Notes:** SmartAlly is "Agentic"—it doesn't just show videos; it interacts and builds with the student.



# Meeting the Standard: TESDA & Accreditation

- SmartAlly courses are not just "online tutorials" - they are accredited pathways to employment.
- **The TESDA AI Course List:**
  - **Tech & Security:** Python Systems & Security, Applied ML, Applied Malware Analysis, Cloud System Analyst.
  - **Medical AI:** AI Clinical Documentation, AI Medical Coding, Healthcare Data Analytics, AI Diagnostics, AI Lab Automation.
  - **Commerce & Finance:** AI Financial Analysis, AI Audit Automation, AI Marketing Analytics, AI Recruitment Screening, AI Tourism Analytics.
- **Accreditation:** Modules are mapped to TESDA Competency Standards and the Philippine Qualifications Framework (PQF).
- **Notes :** The breadth of courses to prove that this initiative covers every major industry in the province.



# The Industry-Academia "Real-Time" Bridge

- Replacing “Projects” with “Market Solutions”
- The Mechanism:
  - **Real-Time Problems:** Local industries provide actual unsolved business challenges.
  - **The Output:** Students build functional AI prototypes (Agents, data models) as their Capstone project.
  - **Certification:** Graduates receive a "Work Experience Certificate" signed by industry partners, proving they have solved actual enterprise problems.
- **Notes:** The "Work Experience Certificate" is what gets them hired. It proves they didn't just study; they delivered.



# Safety, Standards, and Guardrails (DepEd & CHED)

- Innovation must be safe. SmartAlly adheres to national educational governance.
- Safety Infrastructure:
  - **The AI Registry:** A system to track and audit all AI interactions for academic integrity.
  - **Safety Guardrails:** Real-time risk classifiers that filter inappropriate content and ensure "Responsible AI" usage as per DepEd and CHED mandates.
  - **Data Sovereignty:** Keeping student and provincial data secure within the Philippine ecosystem.
- Notes: We have built-in "Risk Classifiers" to ensure safety.



# Faculty Readiness for the New Paradigm

- Faculty role moves from "Lecturers" to "Academic Mentors in AI."
- Faculty Support:
  - **Faculty Copilots:** Tools to help teachers automate grading and administrative tasks so they can focus on high-value mentorship.
  - **Continuous Upskilling:** Faculty are trained in "Industry Relevance" to ensure they are teaching what the market actually needs today.
- **Notes:** remove their "paperwork" to focus on teaching and mentoring .



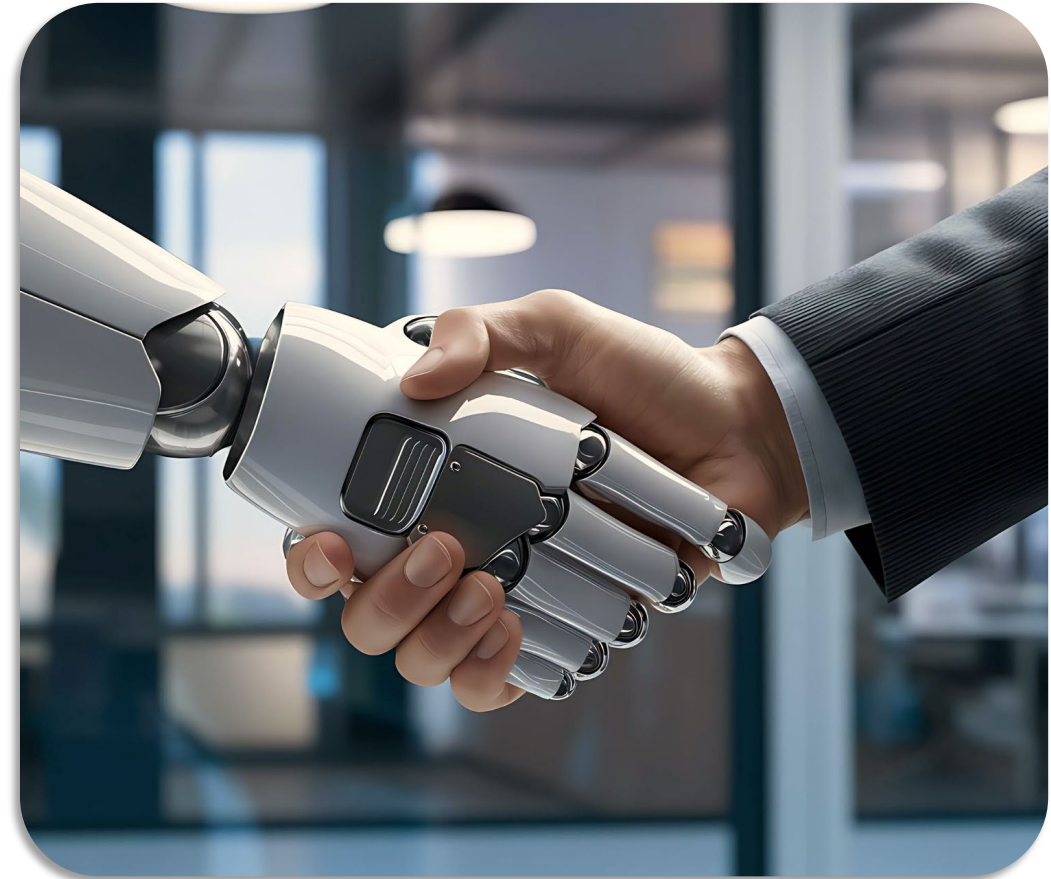
# The Capstone Triad: Roles & Responsibilities

- Success requires a partnership between three key players.
- The Roles:
  1. **Student:** Solution Architect (Builds the AI tool).
  2. **Faculty:** Project Manager (Ensures academic quality and safety).
  3. **Industry:** Product Owner (Provides the problem and validates the solution).
- **Requirement:** Each project must deliver one automation and one insight.
- **Notes:** This defines the "**contract**" between the school and the employer.



# The "Elite Partner" Program for Colleges

- **The Exclusivity:** This is for receptive institutions ready to leapfrog "Digital Transformation" and go straight to "AI Transformation."
  
- **The Four Key Ingredients (Why Sign Up?):**
  1. **Niche Industry Content:** Access to cutting-edge, TESDA-aligned courses that traditional curricula lack.
  2. **On-the-Job Training:** Real-time problem solving with industry partners.
  3. **Research Labs:** Collaboration to set up Advanced AI Labs for developing proprietary models and Intellectual Property (IP).
  4. **Direct Hiring Pipeline:** An offer to hire students who have been trained and certified through the SmartAlly platform.



# Yitro EastWest Advanced AI Labs

- A physical and digital model for the future of the Philippines.
- Strategic Hub:
  - **Sovereign AI:** Development of local language models and Filipino-centric datasets.
  - **Enterprise Playground:** Where local businesses test "Multi-Agent Systems" before full deployment.
  - **Economic Catalyst:** Making the province a destination for global tech investment.
- **The Physical Model:** A hub for Sovereign AI, local language models, and enterprise automation testing.
- **Call to Action:** Invitation for the first "Elite Colleges" and Industry Partners to join the Pilot Program: 1 Research Assistant ; 5 Students | 3 Colleges | 1 Publication inclusion per year.
- **Notes:** The AI Lab is the lighthouse that will attract international companies to the province because of the AI assets and Talent created by the Research labs.





EAST WEST  
INTERNATIONAL EDUCATIONAL  
SPECIALISTS INC.



# Smartally Tutor

*Agentic Learning for A Certified AI Workforce*

# THANK YOU

